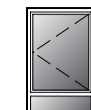


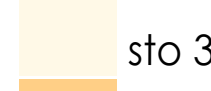
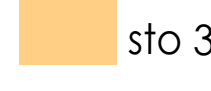
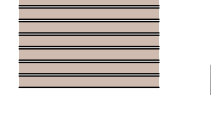
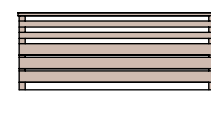
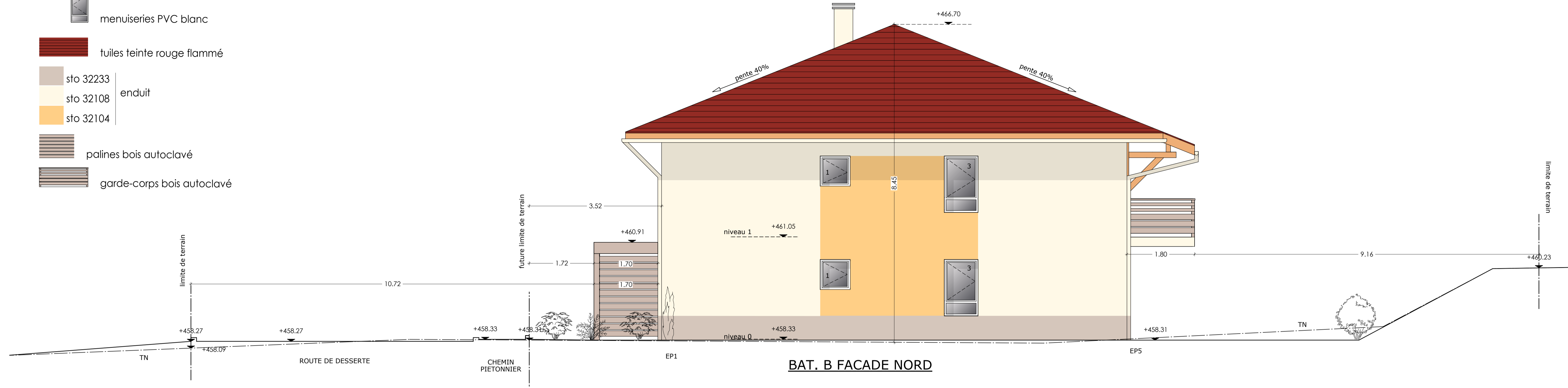
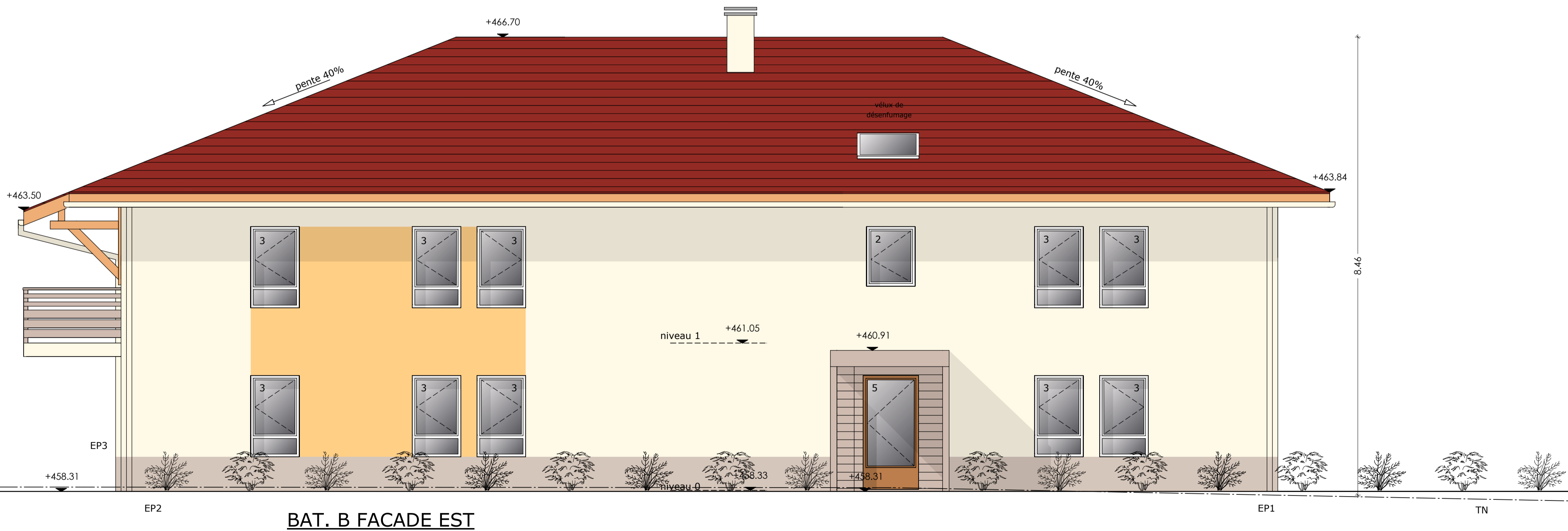


-  menuiseries PVC blanc
-  tuiles teinte rouge flammé
-  sto 32233
-  sto 32108 enduit
-  sto 32104
-  palines bois autoclavé
-  garde-corps bois autoclavé



BAT. B FACADE NORD



BAT. B FACADE EST

**Bâtiment B**  
façades  
échelle : 1/50

10  
indice c

PROJET DE CONSTRUCTION DE 12 LOGEMENTS  
CHEF-LIEU  
74270 SALLENOVES

date	diffusion	MODIFICATIONS	phase	indice
04/06/2012	BET + CT		DCE	a
11/06/2012	BET + CT	Mises à jour	DCE	a
13/08/2012		Ajout bardage entrée	DCE	b
21/08/2012	BET + CT + MO		DCE	c

MAITRE D'OUVRAGE :  HAUTE-SAVOIE HABITAT  
2 rue Marc Le Roux BP 554 74055 ANNECY Cedex  
T 04 50 44 74 00 F 04 50 67 78 69  
[contact@oph74.fr](mailto:contact@oph74.fr)

ARCHITECTE	<b>ATELIER GALBE</b>	74270 CHILLY	<a href="mailto:architecture@ateliergalbe.fr">architecture@ateliergalbe.fr</a>	04 50 22 03 58
ECONOMISTE	<b>CE2I INGENIERIE</b>	74370 METZ TESSY	<a href="mailto:ce2iingenierie@aol.com">ce2iingenierie@aol.com</a>	04 50 69 02 46
STRUCTURE	<b>BUREAU PLANTIER</b>	74960 CRAN	<a href="mailto:info@bureau-plantier.fr">info@bureau-plantier.fr</a>	04 50 67 63 74
FLUIDES	<b>BRIERE</b>	74370 METZ TESSY	<a href="mailto:briere@briere.fr">briere@briere.fr</a>	04 50 51 35 41
CT	<b>DEKRA</b>	74000 ANNECY		04 50 52 88 61

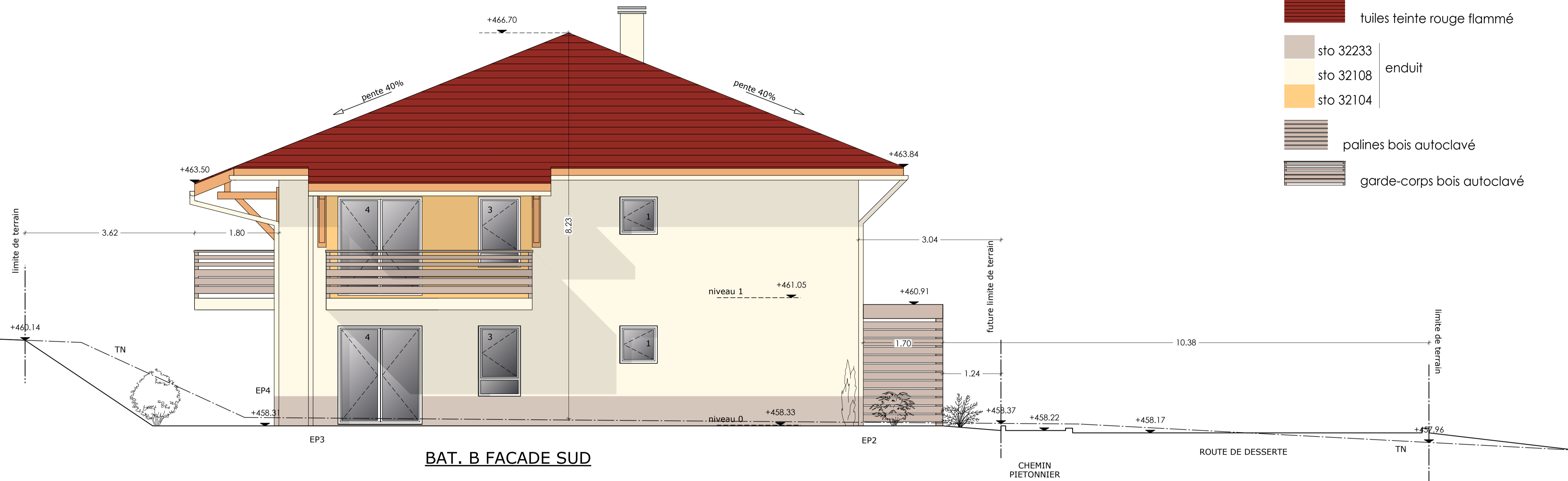
 menuiseries PVC blanc

 tuiles teinte rouge flammé

 sto 32233  
 sto 32108 enduit  
 sto 32104

 palines bois autoclavé

 garde-corps bois autoclavé



BAT. B FACADE SUD



BAT. B FACADE OUEST




**Bâtiment B**  
**façades**  
 échelle : 1/50

11  
 indice **b**

PROJET DE CONSTRUCTION DE 12 LOGEMENTS  
 CHEF-LIEU  
 74270 SALLENOVES

date	diffusion	MODIFICATIONS	phase	indice
04/06/2012	BET + CT		DCE	a
11/06/2012		Mises à jour	DCE	a
21/08/2012	BET + CT + MO		DCE	b

MAITRE D'OUVRAGE :  **HAUTE-SAVOIE HABITAT**  
 2 rue Marc Le Roux BP 554 74055 ANNECY Cedex  
 T 04 50 44 74 00 F 04 50 67 78 69  
[contact@oph74.fr](mailto:contact@oph74.fr)

ARCHITECTE	<b>ATELIER GALBE</b>	74270 CHILLY	<a href="mailto:architecture@ateliergalbe.fr">architecture@ateliergalbe.fr</a>	04 50 22 03 58
ECONOMISTE	<b>CE2I INGENIERIE</b>	74370 METZ TESSY	<a href="mailto:ce2iingenierie@aol.com">ce2iingenierie@aol.com</a>	04 50 69 02 46
STRUCTURE	<b>BUREAU PLANTIER</b>	74960 CRAN	<a href="mailto:info@bureau-plantier.fr">info@bureau-plantier.fr</a>	04 50 67 63 74
FLUIDES	<b>BRIERE</b>	74370 METZ TESSY	<a href="mailto:briere@briere.fr">briere@briere.fr</a>	04 50 51 35 41
CT	<b>DEKRA</b>	74000 ANNECY		04 50 52 88 61